



hello
lille

Tourism

City Guide Olympic Games 2024





LILLE GASTRONOMY AND BEER EXPERIENCE



DU 27 JUILLET
AU 11 AOÛT



TOURISME BRASSICOLE
ATELIER CULINAIRES
MENUS DES CHAMPIONS

BEER TOURS
COOKING SESSIONS
CHAMPIONS MENUS



**ATOUT
FRANCE**
L'Agence de développement
touristique de la France

**MINISTÈRE
CHARGÉ
DES ENTREPRISES,
DU TOURISME
ET DE LA CONSOMMATION**

Miam
Le service à la carte
des restaurants de la région
de Lille

**agence
sublimeurs.**



L'ÉCHAPPÉE BIÈRE
SAVOUREZ L'EXPERTISE

CONTENTS

The Lille European Metropolis is home to 1.2 million people inhabitants who live and work in the very heart of north-west Europe. It's less than 3.5 hours from five European capitals and is one of the world's Top 100 most welcoming cities. Lille has everything - and it's only an hour to the beach.

4 / 7	hello Olympic Games Paris 2024
8	hello events
10 / 17	hello culture
19 / 23	hello heritage
24 / 26	hello visits
27	hello beer
28	hello gastronomy
29 / 32	hello nature
33 / 36	hello family
38 / 39	hello shopping
41	hello practical info
45	hello nightlife

Editorial Manager : Hello Lille Attractiveness Agency

Publishing Director : François Navarro

Editors : Constance Castelain, William Tissot, Frédéric Labendzki, offices de tourisme de la MEL et sites mentionnés

Graphic design and production : Lucas Sabathié, Arthur Guinet

Photo Credits : Samuel Baba, Laurent Javoy, Claire Beaufromé, Martin Vangaeveren, Elie Léon, Pascaline Chombart, Max Le Rouge, Vincent Lecigne, office de tourisme de Lille, Jan D'Hondt, Chloé Dewitte, brasserie Célestin, Bénédicte Douchet, Mathieu Lassalle, MEL, Julien Pitinome, Hemis, V.Solignac, département du Nord, Florent Mayaud, Frédéric Iovino, Peter Mauss, Daniel Rapaich, Elie Léon

Printer : Nord Imprim

Non-contractual prices and information

hello

Olympic Games Paris 2024

Welcome to Lille Metropole, home of the 2024 Olympic Games !



From July 27 to August 11, 2024, the Decathlon Arena — Stade Pierre Mauroy becomes the arena for 52 high-level matches, hosting **the men's and women's basketball preliminary phases**, as well as **the women's and men's handball final phases**.

Entertainment

- **During the Games**, a **sports village** will be set up on the Grand-Place, in partnership with the Caisse d'Epargne and Decathlon, opened from 12 to 6pm everyday except Monday, August 5th.
- Supporters travelling to the Stadium will be welcomed at the 4 Cantons station with a **festive promenade** and a **guinguette** (entertainment, games, relaxation area, food truck...)
- A **video-mapping** on the theme of the Olympic Games will be projected on the front of the Opera House, every evening between 10:30 and 11:30pm during the Games period on the territory.

Information Points

Our advisors and receptionists will be on hand to guide and inform you about the competition and the destination.

- Lille and metropolitan area tourist offices.
- Place des Buisses, Lille: information, ticket and City Pass sales area.
- Festive stroll and guinguette on the edge of the Stade Pierre Mauroy.

Find out more :



WHAT TO DO BETWEEN MATCHES ?



The “Cultural Olympiad” label recognizes projects that bring together “art and sport”, highlighting the values of Olympism.

Exhibition Textimoov ! at Tripostal in Lille

→ until September 29

Anouk Desury at Musée la Piscine in Roubaix

→ until September 29

Soldat Blessé, soldat sportif at the Museum of the Battle of Fromelles

→ until February 2nd, 2025

Exhibition Vas-y champion ! at the Maison natale Charles de Gaulle in Lille

→ from July 10, 2024 to September 22, 2025

Lille Gastronomy and Beer Experience

→ from July 27 to August 11

Other events during the games

Monet à Vétheuil : les saisons d'une vie at the Palais des Beaux-Arts in Lille

→ until September 23

Mariza Merz and Guy Brunet at the LaM in Villeneuve-d'Ascq

→ until September 22 (Mariza Merz)

→ until September 29 (Guy Brunet)

Paul Hemery at the Musée la Piscine in Roubaix

→ until September 1st

Where to buy your tickets?



Retrouvez
toutes les infos
sur le site ilevia.fr

Find all the information
on the website ilevia.fr

Save time,
buy your tickets
in advance.

+0.20€*

SINGLE TICKET

+0.20€*

SINGLE TICKET X10
15€60 à partir du 01/08/2024
15€60 from 01/08/2024

+0.20€*

1-DAY PASS
5€40 à partir du 01/08/2024
5€40 from 01/08/2024



OPEN PAYMENT

*Coût du ticket rechargeable.
*Cost of rechargeable ticket.

****Par carte bancaire directement sur les portillons Open Payment des stations : Gare Lille Flandres, Gare Lille Europe, Gambetta, Rihour, République+Beaux Arts, Les Prés, 4 Cantons, Cité Scientifique et Tourcoing Gare. Plus d'infos sur ilevia.fr**

****By bank card directly on the Open Payment gates at Gare Lille Flandres, Gare Lille Europe, Gambetta, R/hour, République-Beaux Arts, Les Prés, 4 Cantons, Cité Scientifique and Tourcoing Gare. More info on ilevia.fr**

Comment se rendre aux compétitions sportives de cet été ?

How to get to this summer's sports competitions?

ilevia
LES TRANSPORTS DE LA MER



Matchs de basket



Matchs de handball

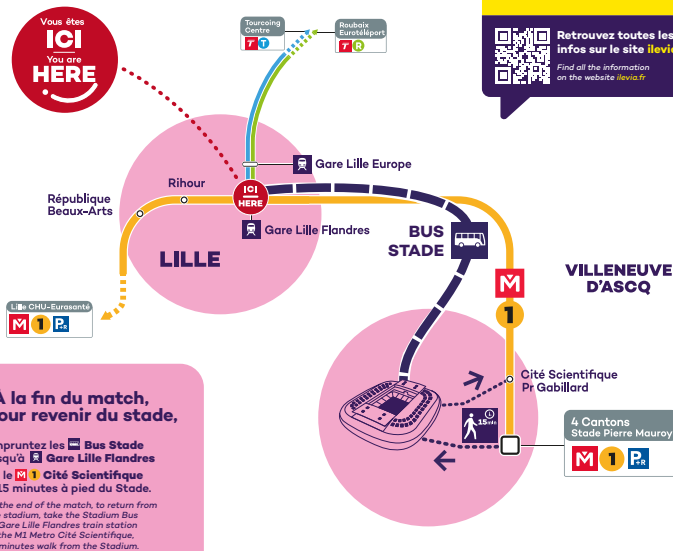
Basketball games from 27/07 to 04/08
Handball games from 06/08 to 11/08

En raison de l'affluence pendant l'évènement, anticipez vos déplacements.

Due to the large number of people attending the event, please plan ahead your travels.

COMMENT SE RENDRE AU STADE PIERRE MAUROY DEPUIS GARE LILLE FLANDRES ?

How to get to the Stade Pierre
Mauroy from Gare Lille Flandres?



LÉGENDE

Métro	Ligne 1	Bus Stade	Marche	Train
Tramway	Ligne Tourcoing	Ligne Roubaix	Parcs Relais	Stade Pierre Mauroy
	Tourcoing line	Roubaix line	Car park	Stadium

Lille Flea Market
14 & 15 September

Lille Street Food Festival
from 3 to 6 October

Tourcoing Jazz Festival
from 12 to 19 October

Lille Beer Festival
from 4 to 10 November

Christmas Markets
From November to December

Art Braderie – Night of the Arts
Early December



Lillarious Festival
From 31 January to 9 February,
2025

Séries Mania Festival
From 21 to 28 March, 2025

Paris – Roubaix
13 April, 2025

Fiesta
From 26 April to 9 November,
2025

URBX
2nd half of June, 2025

**Tour de France, Grand Départ
Lille-Nord de France**
5 July, 2025



Check out Hello Summer and Hello Winter:

Packed with events, exhibitions, guided tours and activities to discover on your own, with family or with friends.





Le LaM, Lille Metropolis Museum of Modern Art, Contemporary Art and Art Brut

The first French museum to combine modern art, contemporary art and art brut, LaM offers a striking panorama of 20th and 21st century art. It features works by Amedeo Modigliani, Annette Messager, Augustin Lesage...

1 allée du Musée | Villeneuve d'Ascq
M Pont de Bois (line 1)
 Bus L6 or 32 stop LaM
 Everyday except Monday 10am-6pm

Tickets: €11/€8
 Free with the City Pass
www.musee-lam.fr

Closing on September 29, 2024
Reopening in February 2026

The Palais des Beaux-Arts

Housed in a resplendent 19th century building, discover a complete panorama of European art from the 12th to 20th century.

Place de la République | Lille
M République (line 1)
 Monday 2pm-6pm
 Wednesday to Sunday 10am-6pm

Tickets: €7/€4/ Reduced price for everyone after 4:30pm weekdays
 Free with the City Pass
www.pba-lille.fr





La Piscine Museum

Dive into France's most elegant swimming pool! Picture this: a former Art Deco public baths transformed into a museum displaying the most beautiful modern sculptures of the 19th and 20th centuries.

23 rue de l'Espérance | Roubaix

M Gare J. Lebas or Grand Place (line 2)

Open Tuesday to Thursday 11am–6pm

Friday 11am–8pm

Saturday and Sunday 1pm–6pm

Tickets excluding temporary exhibitions:

€9/€6 | **Temporary exhibitions** €11/€9

Free with the City Pass

www.roubaix-lapiscine.com

Villa Cavrois

Robert Mallet-Stevens' architectural masterpiece, the Villa Cavrois, is a creative symbol of the 20th century and a modernist manifesto. It was built in 1932 for Paul Cavrois, one of Roubaix's leading textile industrialists.

60 avenue Kennedy | Croix

Tram direction Roubaix stop Villa Cavrois

Open every day except Monday from 10am–6pm

Tickets: €9.50/€7.50

Free for under 25 years old

Free with the City Pass

www.villa-cavrois.fr

TOP TIP !

La Piscine + Villa Cavrois

Tickets: €16.50/person





MUBa Eugène Leroy

Housed in a 19th century private mansion, the MUBa establishes a dialogue between art from previous centuries and the contemporary, between live art and fine arts, while showcasing the work of Eugène Leroy (1910–2000).

2 rue Paul Doumer | Tourcoing

M Tourcoing centre (line 2)

Tram direction Tourcoing stop Tourcoing centre

Open every day except Tuesday and bank holidays 1pm–6pm

Tickets: €5.50/€3/free

Free with the City Pass

Tickets during 2024 summer: €4

www.muba-tourcoing.fr

Le Fresnoy – National Studio of Contemporary Arts

When founded, Le Fresnoy was a place of festivities for a fun-seeking population. Today Le Fresnoy is a centre for training, creativity and entertainment. It is now a high-level audiovisual art school which puts on exhibitions, film showings, concerts and shows.

22 rue du Fresnoy | Tourcoing

M Alsace (line 2)

Wednesday to Sunday 2pm–7pm

Tickets: €4/€3 during exhibitions

Free with the City Pass

www.lefresnoy.net



The Museum of the Battle of Fromelles

Come and discover this French museum, which combines archaeological and scientific techniques, history and the fate of the soldiers involved in this battle. On July 19 and 20, 1916, more than 8,500 men – Australians, British and Germans – died, disappeared or were wounded in the Battle of Fromelles. Come and discover this French museum, which combines archaeological and scientific techniques, history and the fate of the soldiers involved in this battle. Every year, the museum offers a cultural program including temporary exhibitions, workshops and guided tours.

Rue de la Basse Ville | Fromelles

M From Lomme St Philibert subway (line 2) take the 62 or 62R bus line (on reservation) and from Armentières take the 236 or 74R bus line (on reservation) – Stop Mairie de Fromelles

Open everyday 9:30am–5:30pm (except on Tuesday)

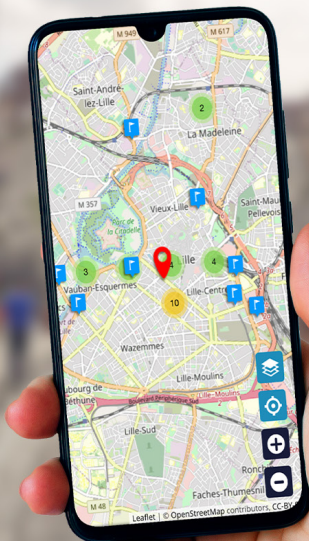
Tickets : €5/€3/Free – Free with the City Pass

Annual closure in February

www.musee-bataille-fromelles.fr



FIND THE MUST-SEES IN LILLE AND THE SURROUNDING AREA AT YOUR FINGERTIPS !



Street art, Art deco, Culture, Nature, Architecture and Heritage, Family, History and Traditions, Unusual walks, Brewery tourism, Behind the scenes and Memory: a variety of themes for curious strolls around Lille.

La Manufacture, Museum of Living Memory and Textile Creation

In an authentic industrial atmosphere, learn about the Lille area's iconic textile industry, how it started and where it's heading: the sound of the machines in operation plunges visitors into the spinning mills of yesteryear while explaining the close links woven between social, technical and urban history.

29 av. Julien Lagache | Roubaix

M Eurotéléport (line 2)

Tram direction Roubaix tram stop Eurotéléport then bus L3 direction Leers La Plaine, stop Fraternité / Manufacture.

Tuesday to Sunday 6pm–6pm

Guided tours 2:30pm and 6pm

Tickets: €6/€4/Free

Free with the City Pass

www.lamanufacture-roubaix.com



The Hospice Comtesse Museum

Entering the museum feels like stepping into a Flemish home of the era. 17th and 18th century furniture, table decorations, still life and vanitas paintings. Its medicinal roots are not forgotten – the Hospice Comtesse has its own pharmacy.

32 rue de la Monnaie | Lille

Bus 14 or Vieux Lille shuttle bus, stop Lion d'Or

Monday 2pm–6pm

Wednesday to Sunday 10am–6pm

Tickets: €4/€3 (out of exhibitions)

Free with the City Pass

Free for under 12 years old



Arab World Institute, Tourcoing

The Arab World Institute, Tourcoing works to promote understanding of Arab cultures in the Hauts de France region. It holds exhibitions, conferences, live performances and educational activities.

9 rue Gabriel Péri | Tourcoing

M Colbert (line 2)

Tuesday to Sunday 1pm-6pm

(during exhibitions) except on public holidays

Tarifs : €5/€4

Free with the City Pass

www.ima-tourcoing.fr



Fort de Seclin

The Musée du Fort de Seclin was born of a family's passion for history and the restoration of old stones. After 7 years of titanic work, the family opened the museum in 2003. The exhibition is dedicated to the history of the First World War, with a special focus on artillery and horse-drawn vehicles from 1870 to 1920.

Chemin du Fort | Seclin

Open Monday to Sunday by appointment only (via questionnaire on website).

Fixed fee €50 up to 8 visitors/€6 per person if more than 8 visitors.

Free with the City Pass

www.fortseclin.com



La Condition Publique

This cultural third-location anchored in its neighborhood features exhibitions, events (Braderie de l'Art, Name festival...), a Fab' Lab', rooftop terraces, a café, and a rich street-art offering both inside and outside the walls.

14 place Faiderbe | Roubaix

M Eurotéléport (line 2)

During opening seasons:

Wednesday and Saturday 1.30pm-7pm

Thursday, Friday and Sunday 1.30pm-6pm

Free with the City Pass

www.laconditionpublique.com

Summer closure until September 11

Charles de Gaulle's birthplace

Discover the genesis and childhood of the man who would become the most illustrious of Frenchmen. Visit his maternal grandparents' house, where he was born on 22 November 1890. Here is where the family gathered throughout his childhood and youth and the future national hero spent his holidays until 1912.

9 rue Princesse | Lille
Bus 10, bus stop Magasin or Old-Lille
shuttle bus
Open every day except Tuesday, 10am–6pm

Tickets: €6/€4/free
www.maisondegaulle.fr



The Musée de l'Illusion

The Musée de l'Illusion is a unique venue offering visual and interactive experiences to trick our perception of reality. Optical illusions, mirror games, trompe-l'œil and sensory challenges are just some of the activities that allow visitors to learn more about the mysteries of our brains and test their senses.

101 avenue le Corbusier | Lille
M Lille Flandres (line 1 and 2)
Monday to Wednesday and Sunday
10pm–20pm
From Thursday to Saturday 10pm–22pm

Tickets: €19/€13
Free for under 4 years old
www.museedelillusion.fr

TOUTE L'OFFRE CULTURELLE AU MEILLEUR PRIX !

TOUTES LES VISITES À
25€/35€/45€!

24H	48H	72H
25€	35€	45€

TRANSPORTS INCLUS



PRÈS DE 40 SITES TOURISTIQUES
À VISITER !

hello -heritage

Old Town Lille is a firm favourite with the tourists: for its cobbled, winding streets, full of charm, and for its luxury and fashion boutiques, historical and architectural heritage, as well as the bars and restaurants.

Lille centre is the city's beating heart, its pedestrian streets buzzing with shoppers. The outdoor cafés and bars of the Grand Place, Place du Théâtre and Place Rihour are where northerners express their sociable and fun-loving side.

The working-class district, **Gambetta-Wazemmes**, is also popular with the Lillois for its hive of activity and shops. Sunday morning hosts the friendly bustle of the legendary Wazemmes Market.

The area around the **train stations and Euralille** symbolises the city's exchange and openness to the region, France and Europe. It's also a symbol of Lille's economic drive – business people and executives step off the TGV, Eurostar and trains from Belgium and head into France's third largest business district in France.

Old Stock Exchange

Undeniably the most beautiful place in Lille – a must-see! The quadrangular building dating from 1653 consists of 24 identical houses enclosing an interior courtyard where booksellers, florists, chess-players, tourists, people out for a stroll and even tango dancers meet!

Place du Général de Gaulle, Rue des Manneliers, Place du Théâtre, Rue des Sept Agaches

Open in the afternoon
Rihour (line 1)

Free entry
www.lilletourism.com





Palais Rihour

Located on the square of the same name, the Palais Rihour, begun in 1453 under Philippe Le Bon and completed twenty years later under Charles Le Téméraire, is all that remains of the flamboyant gothic palace built by the dukes of Burgundy. On the ground floor the magnificent guard room houses Lille's tourist office. On the first floor, the Conclave Room and the vestry with superb stain-glass windows host events.

Place Rihour | Lille

M Rihour (line 1)

Guard Room open from Monday to Sunday 10am-12.30pm / 1.30pm-5.30pm

Conclave Room and Chapel open Monday-Friday at the same times

Free entry

www.lilletourism.com

The Belfries, UNESCO World Heritage Sites

Lille has seven belfries (the UNESCO listed: Armentières, Comines, Lille City Hall and Loos, and the non listed: Lille Chamber of Commerce, Tourcoing Chamber of Commerce and Wambrechies). These and others in the Nord-Pas-de-Calais region epitomise our destination.

Illustrating a variety of architectural styles, including Romanesque, Gothic and Baroque, twenty-three of these buildings in the Hauts-de-France region have been listed as World Heritage Sites since 2005.

For UNESCO, this classification is an extension to the thirty Belgian belfries that are already listed and were built between the 11th and 17th centuries.

whc.unesco.org/fr





Notre-Dame de la Treille and the Centre for Sacred Art

Built in honor of the Virgin Mary under the name of Notre-Dame de la Treille, Lille's neo-Gothic cathedral was erected from 1856 on the site of a former motte castrale. After many ups and downs, its construction was completed in 1999 with the inauguration of the contemporary-style façade, made of an astonishing translucent marble and adorned with a rose, the work of painter Ladislav Kijno. The crypt is also home to the Centre d'art sacré, with its fine collection of contemporary art.

Place Gilleson | Lille

Old-Lille shuttle bus

Opening hours and ticket prices on the website:

www.cathedralelille.fr

Paris, Roubaix and Ghent Gates

The monumental Paris gate represents Lille's attachment to France. The triumphal arch was built between 1687 and 1692 by architect Simon Volland at Louis XIV's request, to celebrate his victory during the siege in 1667. Ghent and Roubaix Gates, the remains of Spanish fortifications built between 1617 and 1621 are also worth a visit.

Porte de Paris, place Simon-Vollant | Lille

M Mairie de Lille (line 2)

Porte de Roubaix, place Saint-Hubert | Lille

M Gare Lille Flandres (line 1 ou 2)

Porte de Gand, rue de Gand | Lille

Old-Lille shuttle bus

www.lilletourism.com





The Citadel

“The Queen of the Citadels” was built between 1667 and 1670 by the Marquis of Vauban, Sébastien Le Prestre, under orders from Louis XIV, following the Sun King’s conquest of Lille and its reattachment to France after 150 years of Spanish occupation. Vauban laid the Citadel’s first stone on 17 June 1668. No less than three million stone blocks, sixty million bricks and seventy million feet of sandstone make up the body of the Citadel, which was built in just three years. Today the heart of the Citadel is closed to the public as it is still used for military purposes: it houses the Rapid Reaction Corps France.

Parc de la Citadelle | Lille
 Bus L1 and L5 – Bus stop Champ de Mars
 Guided visit: reservation at Lille Tourist Office

Tickets: €7/€14
www.parcdelacitadelle.lille.fr

Hospice d’Havré

The Maison Folie Hospice d’Havré has in turn been a hospice, a convent and a school. Today it is a hub of cultural exchange. With exhibitions, shows, concerts, guided tours and workshops, the programme showcases local and international artists, favouring diversity and accessibility to all audiences.

100 rue de Tournai | Tourcoing
 Open everyday except on Tuesdays and bank holidays 1.30pm–6pm
 (except during exhibition set-up and dismantling periods)

Annual closure in August

M Tourcoing centre (line 2)

Tramway direction Tourcoing, Stop Tourcoing centre – Maison Folie Hospice d’Havré



Sanctuary of Sainte-Rita de Vendeville

Classified as a French Sanctuary City on a par with Lourdes or Mont-Saint-Michel, the Sanctuaire Sainte Rita de Vendeville is an unlikely place that attracts 150,000 people every year. The sanctuary, dedicated to Saint Rita, patron saint of hopeless causes, transports you into the mystery of the world. A refuge for those who believe in the impossible, where popular faith is nourished by tales of miraculous cures and divine intervention. Whether you're a pilgrim or a curious visitor, the sanctuary will not leave you indifferent. Soak up the sanctuary's serene atmosphere and let yourself be inspired by the history and devotion that surround it.

38 Rue de Seclin | Vendeville
Open everyday 8:30am-6pm

Free entry
03 20 96 06 22

www.sanctuairesainterita-vendeville.fr



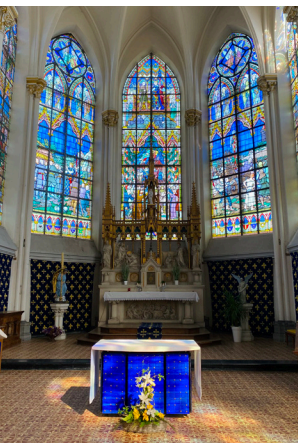
The battle of Bouvines, Saint-Pierre de Bouvines church

Saint-Pierre de Bouvines church, a listed Historic Monument, highlights scenes from the battle fought in the summer of 1214 through its 21 sparkling stained-glass windows. This veritable comic strip will take you through the key stages of the battle, helping you to understand the military strategies, political issues and historical consequences of this major event charged with emotion and heroism.

Open everyday 9am-6pm (in summer) | 10am-5pm (in winter)

Free guided tour of Saint-Pierre de Bouvines church every 2nd Sunday of the month: 4pm from November to March | 5pm from April to October

Visits on request:
contact@seclin-melantois.fr / 09 72 52 85 03



hello visits

Let our tourist offices guide you through the Lille European Metropolis

Come and find inspiration at one of the nine tourist offices: from classic guided tours that reveal secrets of the Lille area, to stand-up paddle-boarding, themed visits and unusual tours – walking, cycling and even by scooter. There's something for everyone. For culture junkies, the City Pass is a must-have that gives free access to around 40 major sites and includes free access to public transport. Discoveries waiting to be made!

The belfries of the Town Halls of Lille and Armentières

You might be breathless by the time you reach the top of the 400 steps that lead to the summit of the Lille Town Hall Belfry, designed by Emile Dubuisson and erected in 1932. Check out the unique 360° panoramic views across the city. Armentières Belfry was built by architect Louis-Marie Cordonnier in the neo-Flemish style in 1934, after nine years of work. Look out from the most beautiful viewpoints, as far as the hills of Flanders to the mining slag heaps.

Lille Town Hall Belfry/ 104 metres high

Place Roger Salengro

M Mairie de Lille (line 2)

On reservation 10am–11am

Without reservation from 11am

Tuesday to Sunday 10am–1pm and 2pm–5:30pm

Last lift 45 minutes before closing time

Tickets: €7,50/€6

Free for under 6

www.lilletourism.com

Armentières Town Hall Belfry / 67 metres high

4 rue Robert Schuman | Armentières

April to October

Tickets: €5 (traditional snack included).

From age 6 only

www.rex-tourisme.com



Old Lille guided tour

Set off to discover the oldest part of the city: as you wander through the squares and narrow streets, the guide will tell you all about the history of Lille and the buildings that have marked its development: Palais Rihour, Vieille Bourse, cathedral, and so on. Let yourself be surprised by the atmosphere of this district, where it's great to stroll, observe, enjoy and shop all year round!

Tickets: €12/person

Reduced price online: €10

Free with the City Pass

Daily departures at 3pm
(except the Braderie weekend, Heritage Days, 1st Jan, 1st May and 25th Dec)

Duration: 2h

www.lilletourism.com



TOP TIP!

• City Tour + Belfry

Price: €18/person

• City Tour + Vieux Lille

Price: €21/person

• City Tour + Beffroi + Vieux Lille

Price: €27/person

City Tour

What could be more enjoyable than to tour the city in an open-top bus? Equipped with an audio-visual system in nine languages (French, English, German, Dutch, Spanish, Italian, Chinese, Japanese and Russian), the bus offers panoramic views of Lille's main monuments, from its origins to the most modern districts.

Tickets: €16/person

Reduced price online: €14

Free with the City Pass

Departures at 10.30am, 12pm, 2.30pm
and 4pm Tuesday to Sunday.

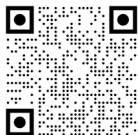
Duration: 75 minutes.

www.lilletourism.com

Past lives in Roubaix

You were a textile worker, factory owner, or a child in the courtyard. But you have forgotten. "Past lives in Roubaix" is an immersive podcast to listen to on the spot and refresh your memory: relive industrial history in seven episodes in seven locations. For an enhanced journey, discover the "memory box" sold at Roubaix Tourism - I love Roubaix.

Free podcast available on all platforms
www.roubaixtourisme.com



Open Roubaix, explore the centre!

This is a great way for the many visitors to the Piscine museum on the first Sunday of the month to extend their discovery of the city (free on this day, except for temporary exhibitions). Visit the city centre along the Fil de Brique, starting from the forecourt in front of La Piscine.

Tickets: €3
Every first Sunday of the month (except in January, August and September)
11am-12:30pm
www.roubaixtourisme.com



The first traces of beer in Lille date back to the end of the first millennium. Since then, at the heart of this bustling city of commerce and then of industry, beer remains one of the identifying markers that has stood the test of time, until its revival at the beginning of the 21st century. Urban, family-oriented and collaborative, the brewing industry is gaining its credentials through its knowledgeable local craftsmen.

The Lille European Metropolitan Area, in collaboration with thirty-five of the city's breweries, has created "Héritage bière", a label to identify craft breweries offering tourist facilities.

There are three categories for these breweries:

- Reception public
- Guided tour
- Taproom

L'Échappée Bière

Lille's leading beer tourism specialist. Check out the different tours offered by these lovers of beer and brewing. Take off on a three-hour rally to discover the breweries with four tasting stops. Or enjoy regular beer tastings in warm, welcoming venues.

From €29
www.echappee-biere.com



TOP TIP!

Find out more about beer tourism and the area's most innovative breweries, where to go for tastings and where to find the most original beers. Download the beer tourism map or pick up a copy in the metropole's tourist offices.

hello gastronomy

From the authentic cuisine of estaminets to the refined dishes of Michelin-starred restaurants, via creative bistronomy and generously-portioned street food: Lille's chefs offer something for everyone, from a quick bite to Gargantuan hunger.

Lille – street food destination

Gastronomy and street food have never been so popular and it's all down to influencers and cooking shows. Like all major French and European cities, Lille is seeing the emergence of food courts, while young locavore chefs are reinvigorating their cuisine.



The Citadel and the Vauban Garden

The superb 110-hectare wooded park offers endless paths for walking and cycling, areas to relax, and there's even a zoo.

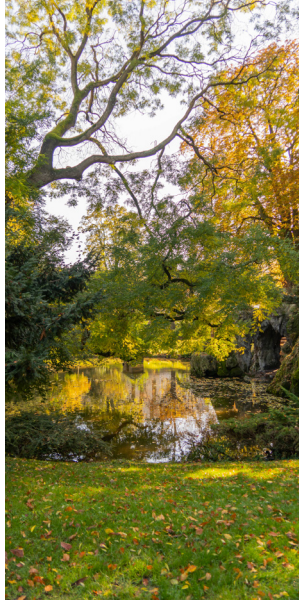
The Vauban Garden next door is a small but perfectly charming English garden, landscaped by Jean-Pierre Barillet-Deschamps, who also designed the Barbieux Park and other Parisian parks and gardens. An unmissable haven of greenery!

Parc de la Citadelle | Lille

M République Beaux-Arts (line 2)

Bus L1 and L5 stop Champ de Mars

www.parcdelacitadelle.lille.fr



Barbieux Park

This typical English garden is a listed site and has been awarded the label "Remarkable Garden".

As well as its 60 species of trees and the magnificent promenade, the Barbieux Park offers : petanque and games for the very young.

Avenue Le Nôtre | Roubaix

Tramway direction Roubaix stop parc Barbieux,



Jean-Baptiste Lebas Park

Why not catch your breath in Jean-Baptiste Lebas Park, also known as the park with the red railings. Cherished by locals for its playground and lawns, you will often see pétanque players or friends sharing a picnic. It's an ideal spot for families.

Boulevard Jean-Baptiste Lebas | Lille

TOP TIP!

Enjoy the atmosphere of a 1920s tramway on a bucolic ride along the Deûle canal between Wambrechies and Marquette. It's a unique and original way to discover the canal-side countryside!

Every Sunday afternoon, and Wednesday afternoons during the summer holidays.
www.wambrechies.fr



East of Lille: The Heron Lakes and Park, Villeneuve d'Ascq

Take a walk close to nature. Runners, walkers and families love it. Visit the natural reserve, the Château, Saint-Jean and Heron Lakes, the Marchenelles hill and the country lanes. The sportiest extend their route over 15kms along the greenways towards Forest-sur-Marque, Willems, Baisieux, Bouvines and Sainghin-en-Mélantois.

M Pont de Bois (line 1) then bus L6 or bus 32 stop LaM



Giants' Garden

Inaugurated in July 2009, landscapers from Atelier Mutabilis have created a two-hectare haven of peace on the site of a former car park. Access is through the Parvis des Nuages, or Cloud Forecourt, planted with five bamboo species. Wander through to the Giants' Grass, where clearings and lush vegetation alternate. Continue to the Garden of Springs, and a peaceful stroll through pools and reflections. Euralille's futuristic towers loom over in the background.

Rue du Ballon I Lille
M Lille-Europe (line 2)
 Tramway stop Romarin
www.lilletourism.com

Go with the flow, along canals and rivers

When you stroll along the canals and rivers in the Lille area, it's not unusual to stumble across works of art, bridges and footbridges, or locks, water treatment stations, marinas, parks and leisure centres. They reveal the different functions of the city's 100 kms of navigable waterways: commercial and economic use, natural reserves, reclaiming landscapes damaged by former industries, places to unwind and have fun. Go with the flow, on foot or by bike. Take off along the tow paths and discover the river's heritage.

enm.lillemetropole.fr





The Marque marshes

Just 15 minutes from the hustle and bustle of Lille, the Marque marshes are unspoilt, hidden natural treasures covering a surprising 144 hectares. The site is made up of three interconnected natural areas: the Fretin, Bonnance and Péronne-en-Mélantois marshes, all of which are crossed by the river Marque. Alone, with family or friends, on foot, by bike or on horseback, it's an enchanting getaway.





The must-see Citadel offers a range of family fun.

The zoo sits next to a playground and fun rides surrounded by nature! How lovely to stroll alongside animals who live in the heart of Lille's green lung. You can even hear the monkeys' cries as you walk around the Citadel.

For the most intrepid, children can let off steam at the City-Parc while parents relax in the outdoor cafés.

M République Beaux-Arts (line 1)
Bus L1 and L5

Bus stop Champ de Mars or walk up Boulevard de la Liberté towards the Citadel.

www.lille.fr/Zoo-de-Lille | www.cita-parc.fr

Discover and rediscover science at the Forum des sciences!

3,000 m2 of temporary exhibitions, a planetarium, science education workshops, a documentation centre, conferences and cultural events for young and old.

1 place de l'Hôtel de Ville, Centre François Mitterrand / Villeneuve d'Ascq

M Villeneuve d'Ascq - Hôtel de Ville (line 1)
www.forumdepartementaldessciences.fr



Hem Meadows

Located in Armentières, it offers a peaceful alternative to the city bustle. Discover 120 hectares of nature surrounding a vast lake with dozens of fun activities for all the family. The Vanupieds (Go Barefoot) sensory trail, playing fields, picnic areas, observation tours of the bird reserve and even a treetop adventure, pedalos, barbecues and patrolled swimming areas when conditions allow.

The Hem Meadows have everything you need to create lasting family memories.

150 rue des résistants / Armentières

M Saint-Philibert (line 1) then bus 99 stop Pierre Bérégovoy.
enm.lillemetropole.fr



Mosaïc Park

Fascinating and vibrant, the Mosaïc Park is a veritable garden of cultures. Come and explore the gardens themed on the five continents. Ten green oases inspired by Lille's diverse population. Awarded "Remarkable Garden", the park displays art works to contemplate throughout your visit. During the summer, everyone can come and enjoy a season of cultural events in a natural setting.

TER (regional train) to Gare de Santes 2km from the park, bikes allowed on the TER.
enm.lillemetropole.fr





The Open Air Museum

The lush green landscape of Villeneuve d'Ascq's Open Air Museum houses typical buildings of the Hauts-de-France region. The buildings were saved from demolition and re-purposed to accommodate artists and artisans who perpetuate traditions and pass on their know-how. Come and visit the indigenous animals, medicinal plant garden and get lost in the hedge maze. An unusual walk not to be missed. From April to October the museum holds a series of shows, activities and exhibitions in the open air – a diverse cultural season for everyone.

143 Rue Colbert | Villeneuve d'Ascq
M Villeneuve d'Ascq Hôtel de Ville (line1)
 Then bus 13 direction Lille Mont de Terre bus stop Masséna.
 15 min on foot to the Open Air Museum
 Opening hours and ticket prices on the website:
enm.lillemetropole.fr





Boat rides aboard the Décidée

Embark on the Décidée, a small open boat, and explore the Deûle-Scheldt canal. Learn about the waterway's eventful history and find out how it is used today. The boat trip lasts around an hour and is guided. On Saturdays, leaving at 2.30pm, the trip is extended to two hours to include passing through a lock.

April–September
Information and reservations on
+33 (0)3 20 63 11 23 or at
relaiscanal@lillemetropole.fr
enm.lillemetropole.fr



TOUT COMMENCE AU*

PRINTEMPS



Mon premier
craquage**

PRINTEMPS.COM

PHOTOGRAPHIE RETOUCHÉE



OFFRE DE BIENVENUE

-15% ⁽¹⁾

DE RÉDUCTION

Offre valable du 01/07/2024 au 30/06/2025

(1) Remise immédiate pour toute adhésion au programme de fidélité Printemps, hors marques points rouges, uniquement dans votre magasin Printemps Lille sur présentation du City Guide. Voir conditions en magasin.



WELCOME OFFER

-5% ⁽¹⁾

STORE DISCOUNT

-12% ⁽²⁾

TAX REFUND

Valid from 01/07/2024 to 30/06/2025

(1) Instant discount for all new membership to our in-store loyalty program on all brands except red point brands, only in Printemps Lille store, on presentation of City Guide

(see conditions in store). (2) For non-European Union residents presenting their passport (see conditions in store). *Everything begins at Printemps **My first crush



WELKOMSTAANBIEDING

-15% ⁽¹⁾

KORTING

Aanbieding geldig van 01-07-2024 tot 30-06-2025

(1) Onmiddellijke korting voor alle leden van het loyaliteitsprogramma van Printemps, met uitzondering van de markeringen met rode stippen, alleen in de winkel Printemps Lille, op vertoon van de City Guide. Zie de voorwaarden in de winkel. *Alles begint bij Printemps **Mijn eerste liefde

PRINTEMPS LILLE, 39-45 RUE NATIONALE - Tél. 01 71 25 26 01

hello shopping

Lille has something for everyone. With its cobbled streets and Flemish façades, Old Town Lille has all the big names in luxury fashion and designer goods – Hermès on rue Grande Chaussée, Louis Vuitton at l'Huitrière, rue des Chats Bossus. The major stores and international brands are in the city centre and at Euralille, while bargains and world aromas can be found in Wazemmes and its famous market.

Old Town Lille

Rue de la Monnaie, rue de la Clef, rue Esquermoise, rue Lepelletier...

Lille centre

Rue Faidherbe, rue de Béthune, rue Pierre Mauroy, rue Neuve...

TOP TIP!
On Sunday, get down to Wazemmes market – one of France's biggest markets. Come and soak up the colourful, bohemian atmosphere.

Place de la Nouvelle Aventure | Lille
M Gambetta (line 1)



Le Printemps

The iconic department store on rue Nationale offers accessories, shoes, beauty products, lingerie and clothes for men, women and children.

39 rue Nationale | Lille
M Rihour (line 1)
Monday to Saturday 10am–8pm

Westfield Euralille

Located in the heart of the city centre, close to two train stations, this shopping mall boasts all the main brands. Euralille has everything: health and beauty, leisure, culture, gifts, home decor, fashion, services, restaurants and even a hypermarket.

M Lille Flandres ou Lille Europe
Monday to Saturday 9:30am–8pm
www.euralille.com

Villeneuve d'Ascq V2 Shopping Centre

Home to over 110 shops and 15 restaurants. Famous brands in men, women and children's fashion as well as interior decoration, beauty and well-being shops.

M Villeneuve d'Ascq | Hôtel de ville (line 1)
Monday to Saturday 9:30am-8:30pm
www.lecentrev2.com



Roubaix: Mc Arthur Glen

The retail centre in Roubaix, McArthur Glen, has more than 70 shops offering a vast selection. With knock-down prices all year round, there's always a bargain, and the open-air shopping centre feels like shopping in town.

44 rue mail de Lannoy | Roubaix
Monday to Saturday 10am-7pm and
Sunday 10am-6pm
M Eurotéléport (line 2)
www.mcarthurglen.com

Circular Creative District

Circular Creative District
A concentration of designer concept stores, artists' studios, sustainable and local...

Around la Piscine Museum/Roubaix
M Gare J. Lebas ou Grand Place Roubaix (line 2)
www.quartiercreatifcirculaire.com

L'Usine de Roubaix

All the trends in men and women's fashion, well-being and home goods in this large retail brand centre which offers outlet prices throughout the year.

228 avenue Alfred Motte | Roubaix
Monday to Saturday 10am-7pm
M Roubaix Eurotéléport (line 2) then bus L4 direction Laennec and get off at Les Hauts Champs stop.
www.usineroubaix.fr



Three young women are posing in front of a red curtain. The woman on the left wears a large pink sun hat, a pink long-sleeved shirt, and a tan jacket. The woman in the center wears red-rimmed glasses, a green and white patterned crop top, and blue jeans, holding a smartphone. The woman on the right wears a tan bucket hat, a white jacket with red stripes and the number '44', and a leopard-print bag.

130 shops and restaurants for you to enjoy.

Your centre is open
Monday to Saturday from 9.30am to 8pm.

Westfield
EURALILLE

hello practical info

Accommodation

Lille Tourist Office
Reservation Centre
www.lilletourism.com
Gîtes de France
www.gites-de-france-nord.fr

Self-service bikes and scooters

V'Lille (mechanics)
TIER (electric)
Lime (electric)

Taxi

(non-exhaustive list)
Taxi Union Lille
Tel: +33 (0)3 20 06 06 06
Europe Taxi
Tel: +33 (0)3 20 56 19 19
Happy Moov (vélos-taxis)
Tel: +33 (0)6 24 16 08 18

Emergency numbers

112 (ambulance, police, firefighter)
Lille municipal police:
+33 (0)3 20 49 56 66



The Tourist Offices

Lille

Palais Rihour | Lille
Open 7 days, all year except
on 1st Jan, 1st May, 25th
Dec 10am– 12.30pm and
1.30pm– 5.30pm
Tel. : +33 (0)3 59 57 94 00
contact@lilletourism.com

M Rihour (line 1)
www.lilletourism.com

Roubaix

Tel: +33 (0)3 20 65 31 90
www.roubaixtourisme.com

Villeneuve d'Ascq

Tel: +33 (0)3 20 43 55 75
www.villeneuvedascq-tourisme.eu

Armentières and Weppes

Tel: +33 (0)3 61 76 21 85
www.rex-tourisme.com

Seclin and surroundings

Tel: +33 (0)9 72 52 85 03
www.seclin-tourisme.fr

Tourcoing

Tel: +33 (0)3 20 26 89 03
www.tourcoing-tourisme.com

Val de Deûle and Lys

Tel: +33 (0)3 59 50 74 49
www.valdedeule-tourisme.fr

Wasquehal

Tel: +33 (0)3 20 65 73 40
www.ville-wasquehal.fr

Wattrelos

Tel: +33 (0)3 20 75 85 86
www.wattrelos-tourisme.com

Lille Metropole has been awarded the Innovative and Sustainable Destination label. This national certification testifies to the collective commitment of our destination and its stakeholders to sustainable tourism, as demonstrated by a number of actions.

Profitez de tarifs sur mesure !

EN : Make the most of our tailor-made fares !

NL : Profiteer van tarieven op maat !

• **Trajet unitaire 1€80* : titre valable 1h**

EN : Single Valid 1 hour

NL : Enkele reis 1 uur geldig

• **Trajets x10 : titre valable 1h**

EN : Single Valid 1 hour

NL : Enkele reis 1 uur geldig

• **Nos pass 1 à 7 jours**

EN : Our passes 1 to 7 days

NL : Voordeelpas 1 tot 7 dagen

Où acheter ses titres de transport ?

EN : Where to buy tickets

NL : Waar kan ik tickets kopen ?

• **En agence ilévia et aux distributeurs automatiques**

EN : In ilévia agencies and or ticket machines

NL : In een ilévia-agentschap en bij een kaartautomaat

• **En ligne sur ilevia.fr**

EN : Online ilevia.fr

NL : In de webshop ilevia.fr

MÉMO MOBILITÉS



MÉTRO



TRAM

CHEMINEMENT PIÉTON

AGENCE ILÉVIA

PARKING RELAIS

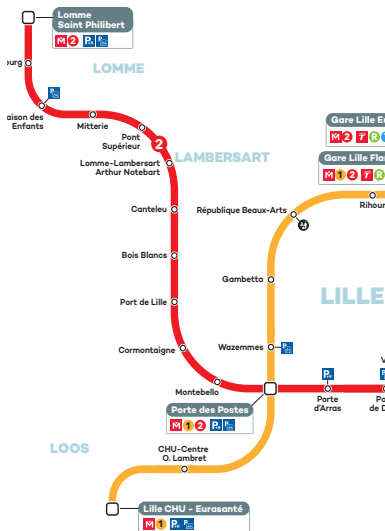
PARKING VÉLO SÉCURISÉ

TOUTES LES STATIONS SONT ACCESSIBLES

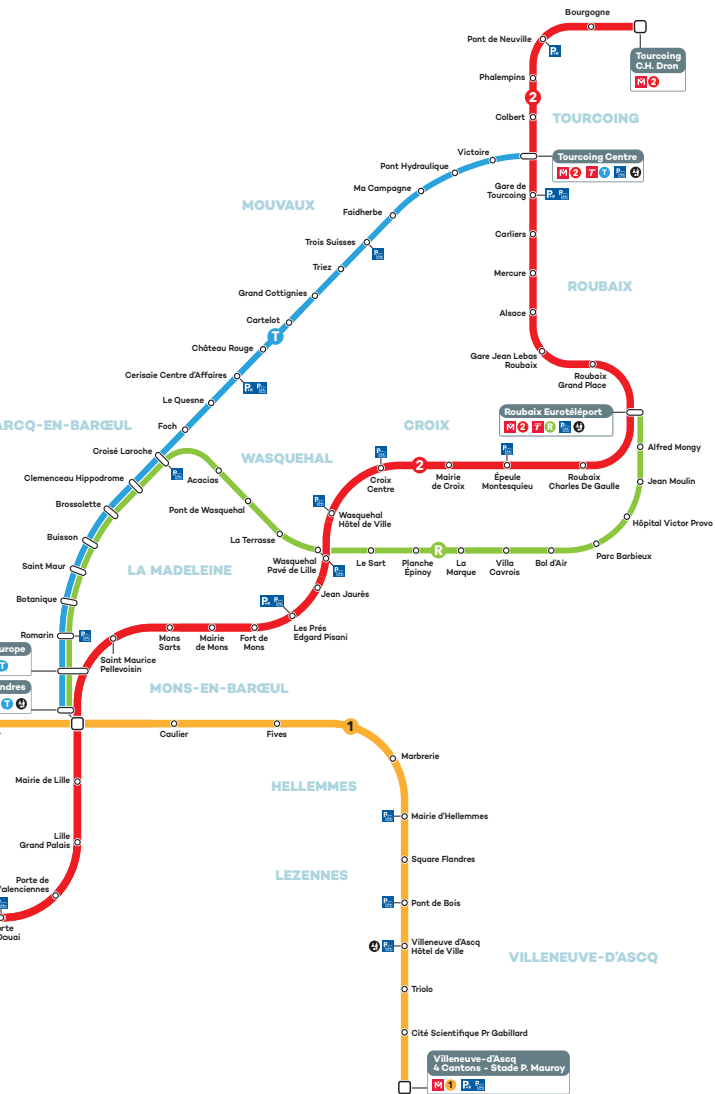
Téléchargez l'application ilévia

EN : Travel with the ilévia app

NL : Uw trajecten met de ilévia-app



* hors coût du support



On vous emmène là où vous avez envie.

EN : We will take you, where you want to.

NL : Wij brengen u graag waar u heen wilt.

Quand on arrive sur la Métropole Européenne de Lille, on n'a qu'une envie : Tout voir, tout déguster, tout visiter.

Alors c'est parti !

EN : When you arrive in the Lille European Metropolis, you will want just one thing : to see it all, taste everything and go everywhere. So, what are you waiting for?

NL : Wanneer u aankomt in de Eurometropool Lille, wilt u maar één ding : alles zien, proeven en bezoeken. Dus laten we gaan !



1 MÉTRO

**TOUTES LES MINUTES
EN HEURE DE POINTE**

EN : 1 subway train every minute during rush hour

NL : Elke minuut 1 metro tijdens het spitsuur



12 LIANES

**TOUTES LES 10 MINUTES*
EN HEURE DE POINTE**

EN : 12 express buses every 10 minutes during rush hour

NL : Elke 10 minuten 12 lianen tijdens het spitsuur



1 TRAM

TOUTES LES 8 MINUTES

● LILLE FLANDRES
● ROUBAIX OU TOURCOING

EN : 1 tram every 8 minutes Lille Flandres Roubaix or Tourcoing

NL : Elke 8 minuten 1 tram Lille Flandres Roubaix of Tourcoing



**260 STATIONS V'LILLE
ACCESSIBLES 24H/24 ET 7J/7**

EN : Find a V'lille at one of our 260 stations available 24/7

NL : 260 fietsstations V'lille Ze straat altijd voor u klaar 24/7



ilévia

LES TRANSPORTS DE LA MEL

*Toutes les 15 minutes en période d'été

hello nightlife

Gare Saint Sauveur, the former train station transformed into a cultural venue, opens its Bistro St So every weekend until midnight. Enjoy another corner of the Flanders capital while having a dance.

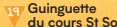
Or lose yourself in **rue Royale and rue Saint-André in Old Town Lille**, which remains one of the most popular areas, bustling with restaurants and bars, where the locals enjoy staying out until late. It's touristy while retaining a warm and vibrant vibe. Just like the Grand Place where you can grab a drink.

If you're a party animal you'll love **rues Masséna and Solférino**, also known as the "rues de la soif" (the thirst streets). This hot spot of student nightlife is bursting with bars, night clubs, pubs, cocktail bars and events spaces with varied programmes.

Another district to get to know if you like to go out in the evening in Lille is **Wazemmes**. Around the famous Halles, which during the day is home to gourmets and local craftsmen, come and find terraces and bars that are welcoming and unpretentious in the evening.

Finally, hop on a v'lille and ride along the Deûle from the citadel to **Saint-André-lez-Lille**, where a former spinning mill is home to a brasserie, an indoor games hall (arcades, bowling, restaurants) and a food court!





- | | | | | | | | |
|---|---|----|--|----|--|----|--|
| 1 | Citadelle de Lille
LILLE | 7 | 5 avenue de Robersart
WAMBRECHIES | 13 | Quai de Bordeaux
TOURCOING | 19 | 25 Boulevard Jean Baptiste Lebas
LILLE |
| 2 | 51 Avenue du Champ de Course
LAMBERSART | 8 | 1015 rue de Quesnoy
WAMBRECHIES | 14 | Port de Plaisance Fluviale Eric Tabarly
HALLUIN | 20 | 150 quai du château
WAMBRECHIES |
| 3 | Port de Lille
LILLE | 9 | 2 route de Quesnoy
WARNETON | 15 | 1 allée du Musée
VILLENEUVE-D'ASCO | 21 | Parc du Lion
WATTRELOS |
| 4 | Rue du Quai
LA MADELEINE | 10 | Ferme de l'Hôtel
BONDUES | 16 | Parc des Sports
ROUBAIX | 22 | Gare d'eau - Quartier Bois Blancs
LILLE |
| 5 | Rue de la Fontaine
MARQUETTE-LEZ-LILLE | 11 | 157 Avenue de la Marne
MARCO-EN-BAROEUL | 17 | Parc des Sports
ARMENTIÈRES | 23 | 8 Chem. Saint-Michel
QUESNOY-SUR-DEÛLE |
| 6 | 14 Chemin de Wervicq
MARQUETTE-LEZ-LILLE | 12 | 4 Avenue Pierre Mauroy
WASQUEHAL | 18 | 269 Route Nationale
LA CHAPELLE D'ARMENTIÈRES | 24 | Juillet - Parc Dalle Dumont rue de Linselles
Août - Parc de la Mairie rue Gabriel Péri
WERVICQ-SUD |

Scan for info & reservations



to
Charleroi



SHUTTLE
DIRECT TO
AIRPORT

from
Lille
Centre

to
Lille
Lesquin



to
Bruxelles
Zaventem



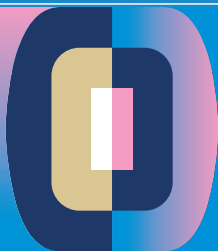
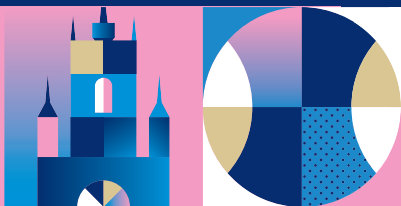
flibco.com

Your airport connection



**Lille Metropole welcomes you
to experience the 52 basketball
and handball matches and support
the world's greatest athletes!**

**EXPERIENCE
THE OLYMPIC GAMES!**
FROM JULY 27 TO AUGUST 11



lesjeux.lillemetropole.fr

